

# KARIBAN

**REFERENCE :** K959

**SIZES :** S\_M\_L\_XL\_XXL\_3XL\_4XL

**COMPOSITION :**

Fabric : Cotton / Acrylic knitted - 500 50%cotton / 50%acrylic

Lining 1 : Polyester polarfleece - 210 For inner body and top pocket sack 100%polyester

Lining 2 : Polyester woven - 60 For sleeve lining and under pocket sack 100%polyester

Padding : Polyfil 50 For sleeve lining 100%polyester

**WEIGHT :**

Fabric : 500 gsm

Lining 1 : 210 gsm

Lining 2 : 60 gsm

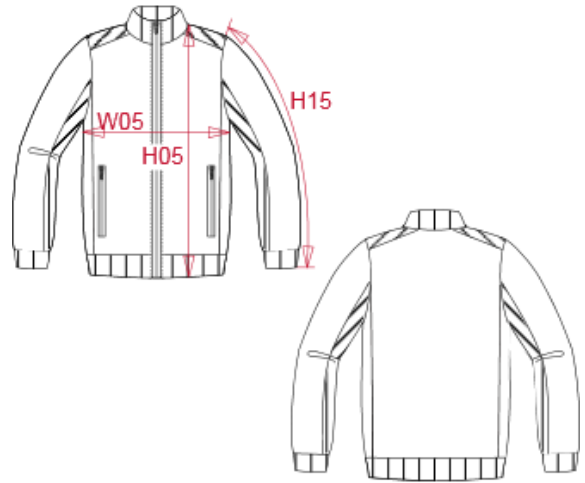
Padding : 50 gsm

**TECHNICAL DETAIL :**

Softner silicon

**ARTICLE WEIGHT :**

1150 gr/pc



DESCRIPTION	
<b>Français :</b>	Cardigan doublé polaire
<b>English :</b>	Fleece lined cardigan
<b>Nederlands :</b>	Met fleece gevoerde cardigan
<b>Deutsch :</b>	Cardigan mit Fleecefutter
<b>Español :</b>	Cárdigan forrado polar
<b>Italiano :</b>	Cardigan foderato in pile
<b>Português :</b>	Casaco de malha com forro polar

COLORS	PANTONE SERIGRAPHIE
Black	Black
Dark grey heather	Based on 446C

MEASUREMENT							
Description	S	M	L	XL	2XL	3XL	4XL
<b>H05 (M)</b> Hauteur totale / Total height	69	71	73	75	77	79	81
<b>W05 (M)</b> 1/2 largeur poitrine à 1.5cm de l'emmanchure / 1/2 chest width at 1.5cm below armhole	50	53	56	59	62	65	68
<b>H15I (M)</b> Longueur manche avec bord côte / Sleeve length with rib	63,50	65,50	67,50	69,50	71,50	73,50	75,50

CARE LABEL				

PACKING	
Box	5 pcs / box S-XXL => L:60cm W:40cm H:21cm GW:6.87kg NW:5.72kg 3XL-4XL => L:60cm W:40cm H:25cm GW:8.81kg NW:7.66kg