

# KARIBAN

REFERENCE : K3029

SIZES : XS\_S\_M\_L\_XL\_XXL\_3XL

**COMPOSITION :**

Main fabric : Organic cotton single jersey - 140 For solid colors (body & neckline tape)

OCS100 certified 100%cotton

Main fabric : Organic cotton / viscose 98/2 - 140 For Ash heather (body & neckline tape)

OCS blended certified 98%cotton/2%viscose

Main fabric : Organic cotton / viscose 90/10 - 140 For Oxford grey (body & neckline tape)

OCS blended certified 90%cotton/10%viscose

**WEIGHT :**

Main fabric : 140gsm

Main fabric : 140gsm

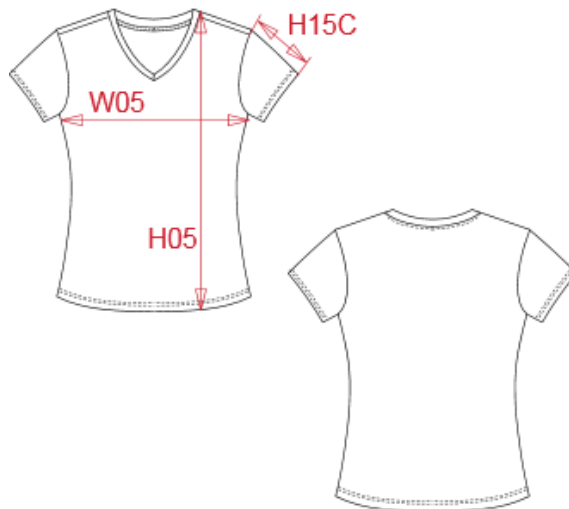
Main fabric : 140gsm

**TECHNICAL DETAIL :**

OCS certified

**ARTICLE WEIGHT :**

96 gr/pc



DESCRIPTION	
<b>Français :</b>	T-shirt BIO150 col V femme
<b>English :</b>	Ladies' BIO150 V-neck t-shirt
<b>Nederlands :</b>	Dames-t-shirt BIO150 V-hals
<b>Deutsch :</b>	Damen-T-Shirt BIO150 mit V-Ausschnitt
<b>Español :</b>	Camiseta BIO150 cuello de pico mujer
<b>Italiano :</b>	T-shirt donna BIO150 collo a V
<b>Português :</b>	T-shirt de senhora BIO150 com decote V

COLORS	PANTONE SERIGRAPHIE
Black	Black
Dark grey	447C
Light royal blue	653C
Lime	367C
Navy	433C
Orange	1585C
Ash heather	Based on Warm gray 1C
Red	200C
Tropical blue	7468C
White	White
Wine	504C
Forest green	5605C
Oxford grey	Based on Cool gray 7C

MEASUREMENT							
Description	XS	S	M	L	XL	XXL	3XL
<b>W05 (M)</b> 1/2 largeur poitrine à 1.5cm de l'emmanchure / 1/2 chest width at 1.5cm below armhole	43	46	49	52	55	58	61
<b>H09 (L)</b> Hauteur totale devant / Front total height	60	62	64	66	68	70	72
<b>H15C (M)</b> Longueur manche courte / Short sleeve length	15,75	16,50	17,25	18	18,75	19,50	20,25

CARE LABEL				

PACKING	
Box	100 pcs / box XS => L:60cm W:40cm H:30cm GW:9.7kg NW:8.3kg S => L:60cm W:40cm H:30cm GW:10.5kg NW:9.1kg M => L:60cm W:40cm H:30cm GW:11.3kg NW:9.9kg L => L:60cm W:40cm H:32cm GW:12.3kg NW:10.8kg XL => L:60cm W:40cm H:32cm GW:13.6kg NW:11.7kg XXL => L:60cm W:40cm H:33cm GW:14.2kg NW:12.7kg 3XL => L:60cm W:40cm H:33cm GW:15kg NW:13.6kg