

KARIBAN

REFERENCE : KV2301

SIZES : XS_S_M_L_XL_XXL

COMPOSITION :

Main fabric : Cotton / Polyester fleece 290 80%cotton / 20%polyester

Fabric 2 : Cotton / Viscose Waffle 200 For inner hood lining 85%cotton/15%viscose

WEIGHT :

Main fabric : 280 - 290 gsm

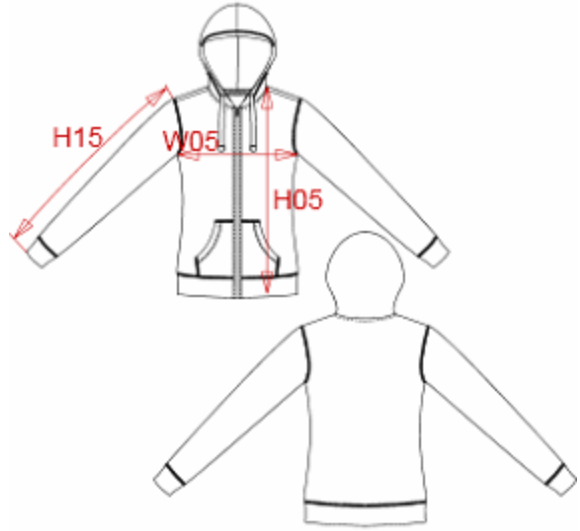
Fabric 2 : 200 - 210 gsm

FABRIC CONSTRUCTION AND FINISHING :

Gaugge 20gg Reactive dyed

ARTICLE WEIGHT :

560 gr/pc



DESCRIPTION	COLORS	PANTONE SERIGRAPHIE
Français : Sweat-shirt zippé femme à capuche	Vintage charcoal	446C
English : Ladies zip hooded sweatshirt	Vintage navy	533C
Nederlands : Dames sweater met capuchon en rits	Vintage red	7427C
Deutsch : Damen full zip hooded sweat	Vintage blue	2144C
Español : Sudadera con capucha y cremallera para mujer	Vintage grey	7539C
Italiano : Felpa donna cappuccio con zip	Vintage green	7730C
Português : Casaco sweatshirt de senhora com capuz		

MEASUREMENT								
Description	Tol +/-	Tol +/- Taille max	XS	S	M	L	XL	2XL
H05 Hauteur totale avec BC / Total height with rib			59,50	61	62,50	64	66,25	68,50
W05 1/2 largeur poitrine / 1/2 chest width	2,5%	2,0%	42,50	44,50	46,50	48,50	51,50	54,50
H15 Longueur manche avec BC / Sleeve length with rib			61	62	63	64	65,25	66,50

CARE LABEL				

PACKING	
Box	20 pcs / box XS => L:60cm W:43cm H:32cm GW:11.10kg NW:9.50kg S => L:60cm W:43cm H:32cm GW:11.60kg NW:10.00kg M => L:62cm W:45cm H:35cm GW:12.00kg NW:10.40kg L => L:62cm W:45cm H:35cm GW:12.50kg NW:10.90kg XL => L:65cm W:46cm H:35cm GW:13.50kg NW:11.70kg XXL => L:66cm W:49cm H:35cm GW:13.90kg NW:12.10kg