

B&C DNM INVINCIBLE /W. - WW D21



MEDIUM FIT

Women's sweatshirt with raglan sleeves

- Wide crew neck sweatshirt
- Raglan sleeves
- French Terry
- Cover stitched raw edge at collar, cuffs and bottom hem
- Nice contrast between inner and outer fabric
- Collar, cuffs and bottom hem in 2x2 rib
- Feminine cut
- Side seams
- Special colour: Shades of Grey with dip dye effect



75% cotton - 25% polyester

French Terry

300 g/m²

XS - S - M - L - XL

5 pcs/pack & 20 pcs/carton

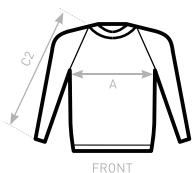


Dip dye: The characteristics of the treatments make each garment original and unique. Variations should be considered as a sign of quality.



DUO CONCEPT

with B&C DNM Invincible /men



FRONT



BACK

SIZES [CM]

| B&C DNM INVINCIBLE /W. WW D21 | XS | S | M | L | XL | XXL | XXXL |
|-------------------------------|----|------|----|------|----|-----|------|
| A HALF CHEST | 46 | 49 | 52 | 55 | 58 | - | - |
| B CENTER BACK LENGTH | 55 | 56,5 | 58 | 59,5 | 61 | - | - |
| C2 SLEEVE LENGTH (RAGLAN) | 61 | 62,5 | 64 | 65,5 | 67 | - | - |

