

KARIBAN

REFERENCE : K789

SIZES : 38_40_42_44_46_48_50_52_54_56_58

COMPOSITION :

Main fabric : Peached cotton twill - 250 100%cotton

WEIGHT :

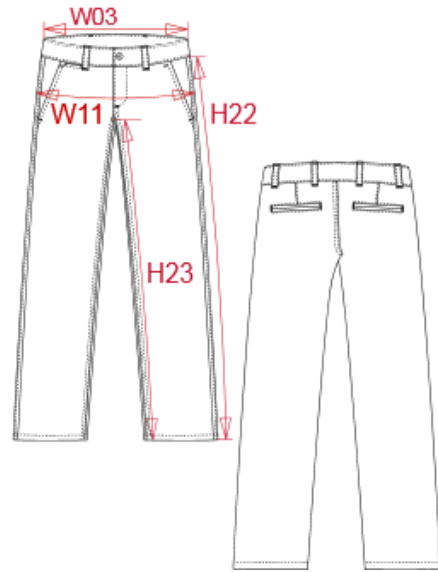
Main fabric : 250 gsm

FABRIC CONSTRUCTION AND FINISHING :

Enzyme wash

ARTICLE WEIGHT :

420 gr/pc



DESCRIPTION	
Français :	Pantalon chino
English :	Men's chino trousers
Nederlands :	Heren chino
Deutsch :	HERREN CHINO HOSE
Español :	Pantalón chino para hombre
Italiano :	PANTALONI CHINO UOMO
Português :	Calças Chino

COLORS	PANTONE SERIGRAPHIE
Black	Black
Dark navy	532C
Beige	7535C
Charcoal	2334C
Washed blue	2133C
Washed red	193C

MEASUREMENT												
Description	38	40	42	44	46	48	50	52	54	56	58	
W03 1/2 ceinture / 1/2 waist length	40	42	44	46	48	51	53	55	57	59	61	
W11 1/2 bassin / 1/2 hip width	49	51	53	55	57	60	62	64	66	68	70	
H22 Longueur côté / Side length	102	103,5 0	104	104,5 0	106	106,5 0	107	108,5 0	109,5 0	110	110,5 0	
H23 Longueur entrejambe / Inside leg length	84	85	85	85	86	86	86	87,50	87,50	87,50	87,50	

CARE LABEL				

PACKING	
Box	20 pcs / box 38-42 => L:55cm W:40cm H:18cm GW:10.80kg NW:9.40kg 44-50 => L:60cm W:40cm H:18cm GW:12.00kg NW:10.40kg 52-58 => L:68cm W:42cm H:20cm GW:13.20kg NW:11.40kg