

KARIBAN

REFERENCE : K462

SIZES : S_M_L_XL_XXL_3XL

COMPOSITION :

Main fabric : Brushed Polyester / Cotton fleece 60/40 - 300
60%polyester / 40%cotton

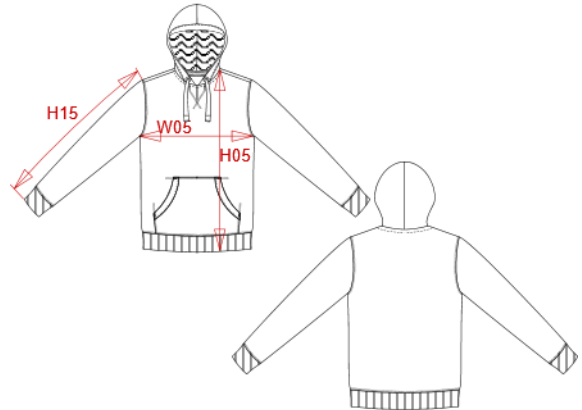
Lining 1 : Cotton / Polyester waffle 60/40 - 215 For hood lining
60%cotton / 40%polyester

WEIGHT :

Main fabric : 300 gsm
Lining 1 : 215 gsm

ARTICLE WEIGHT :

640gr/pc



| DESCRIPTION |
|--|
| Français : Sweat-shirt capuche "mélange" |
| English : Melange hooded sweatshirt |
| Nederlands : Sweater met capuchon polykatoen |
| Deutsch : Kapuzen-Sweatshirt, Mischgewebe |
| Español : Sudadera con capucha «melange» |
| Italiano : Felpa con cappuccio mélange |
| Português : Sweatshirt com capuz em poliéster/algodão |

| COLORS | PANTONE SERIGRAPHIE |
|-----------------------|---------------------|
| Dark grey heather | Based on 446C |
| Blue heather | Based on 7545C |
| Tropical blue heather | Based on 7468C |
| Green heather | Based on 556C |
| Dark red heather | Based on 492C |

| MEASUREMENT | | | | | | | |
|--|-------|-------|-------|-------|-------|-------|--|
| Description | S | M | L | XL | 2XL | 3XL | |
| H05 (M) Hauteur totale / Total height | 70 | 72 | 74 | 76 | 78 | 80,75 | |
| W05 (M) 1/2 largeur poitrine / 1/2 chest width | 51,50 | 54,50 | 57,50 | 60,50 | 63,50 | 67,50 | |
| H15B (M) Longueur manche avec poignet / Sleeve length with cuff | 65,50 | 67,50 | 69,50 | 71,50 | 73,50 | 75,50 | |

| CARE LABEL |
|------------|
| |

| PACKING | |
|---------|--|
| Box | 20 pcs / box S-M => L:52cm W:38cm H:60cm GW:15.32kg NW:12.70kg L-XL => L:57cm W:40cm H:60cm GW:17.22kg NW:14.22kg XXL-3XL => L:63cm W:42cm H:60cm GW:18.60kg NW:15.40kg |